

REJECT HATE

Documentary Series

1/17 AT 12 PM | VIRTUAL
1/31 AT 5:30 PM | RU-NB
2/20 AT 6 PM | RU-NWK
3/27 AT 3 PM | RU HEALTH (NWK)
4/17 AT 11:20 AM | RU-CMD

Join us for a university-wide documentary series, "Reject Hate," that focuses on recent alarming incidents of hate and its impact on targeted communities to remind us all that, unchecked, hate kills.

go.rutgers.edu/meetthemoment



INSTITUTIONAL EQUITY

'Speak Up!' Workshop

1/23 AT 1 PM | VIRTUAL EVENT

An introduction to the concepts of diversity, inclusion, intersectionality, equity and social justice, including opportunities to apply these concepts to our professional and personal lives.

go.rutgers.edu/speak-up





RUTGERS

SPRING 2024 SELECTED EVENTS

DIVISION OF DIVERSITY, INCLUSION,
AND COMMUNITY ENGAGEMENT
UNIVERSITY EQUITY AND INCLUSION



FACULTY DIVERSITY

Faculty 'Soul-Saving' Socials

SPRING SEMESTER DATES AVAILABLE ONLINE

A relaxed environment where faculty peers from all backgrounds and ranks engage one another in conversation about the themes raised in *The Black Academic's Guide to Winning Tenure—Without Losing Your Soul* by Kerry Ann Rockqushore and Tracey Laszloffy.

go.rutgers.edu/soulsaving



DIVERSITY EDUCATION

'Equity Fundamentals' Workshop

1/24, 2/13 & 3/20 AT 10 AM | VIRTUAL EVENT

An introduction to the concepts of diversity, inclusion, intersectionality, equity and social justice, including opportunities to apply these concepts to our professional and personal lives.

go.rutgers.edu/equity101



NAVIGATING TENSIONS AFFIRMING COMMUNITY

Speaker Series

1/25 AT 12 PM | RU-NB
2/28 AT 4 PM | RU HEALTH (NB)
3/7 AT 3 PM | RU-CMD
4/9 AT 6 PM | RU-NWK

Join us for a university-wide speaker series, "Navigating Tensions, Affirming Community," that will challenge us to do the hard work to live up to and reflect our values.

go.rutgers.edu/meetthemoment




EDUCATIONAL EQUITY

Access Week 2024

2/19 TO 2/23 | IN-PERSON EVENTS

Access Week aims to create campus awareness of the need for an equity mindset to help all students thrive. This annual, week-long initiative features a range of public lectures, faculty, staff and student workshops, and student programming. Access Week highlights the academic, social, and cultural resources essential for the success of first-generation, low-income, and other underserved student groups.

go.rutgers.edu/accessweek



WORK TOWARDS INCLUSION

RUTGERS
University Equity and Inclusion

Diversity Strategic Plan Progress Update Feature for Rutgers-New Brunswick

2/21 AT 12 PM
COLLEGE AVE. STUDENT CENTER,
MULTIPURPOSE ROOM

go.rutgers.edu/nbprogress

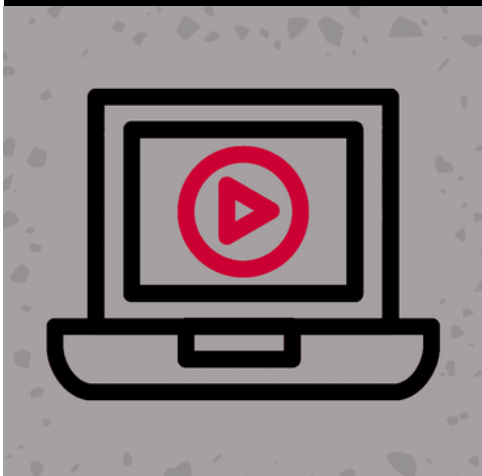
FACULTY DIVERSITY

'Tenure & Time Management' Workshop

3/1 AT 10 AM | VIRTUAL EVENT

This session is designed to address common faculty challenges and provide participants with concrete skills, from time management to network building. Open to current and future faculty.

go.rutgers.edu/ttm24



FACULTY DIVERSITY

Mutual Mentoring Grants Program Symposium

3/5 AT 11 AM | NEW BRUNSWICK THEOLOGICAL SEMINARY

The Mutual Mentoring program supports faculty at any career stage by developing robust mentorship networks within and outside of Rutgers to combat isolation, ensuring faculty have the necessary resources to thrive. Attend our inaugural symposium to learn about the impact of faculty mentoring networks and cross-campus collaborative projects from the first grant cycle.

go.rutgers.edu/mutualmentoring



INSTITUTIONAL EQUITY

Education as Disruption Virtual Intensive

3/27 & 3/28 AT 9 AM | VIRTUAL EVENT

A two-day virtual event designed to take advantage of the diversity education and bias prevention offerings available universitywide and beyond. We continue to partner with the Diversity Education Network, a universitywide network of units engaged in equity, access, diversity, inclusion and justice capacity building.

go.rutgers.edu/ead24



DIVERSITY EDUCATION

Research2Practice Symposium

4/2 AT 9 AM | HYBRID EVENT

Join Rutgers researchers as they share innovative and cutting-edge workshops and tools designed to interrupt bias and harassment; broaden understanding of diversity, equity, access, belonging and inclusion; and advance intersectional understanding.

go.rutgers.edu/r2psymposium



FACULTY & STAFF DIVERSITY

Faculty & Staff of Color Reception

4/4 AT 4 PM | THE RUTGERS CLUB

An evening of networking and community building to continue conversations on how to nurture a vibrant, inclusive community that supports the recruitment and retention of faculty and staff of color. Open to all faculty and staff of the Rutgers-New Brunswick community.

go.rutgers.edu/fsc24



DIVERSITY EDUCATION

Power, Identity & Privilege in Equity Work

4/16 AT 12 PM | VIRTUAL EVENT

This workshop invites participants to reflect on how our own identities and positionality (power, privilege, or lack of it) impact diversity, equity, and inclusion work at Rutgers.

go.rutgers.edu/equitywork

SCAN FOR MORE EVENTS!



DIVERSITY EDUCATION

EDI Facilitator Training

5/3 AT 9 AM | VIRTUAL EVENT

A four-hour introduction to facilitating EDI dialogues. Participants learn about their own bias as facilitators and how to mitigate this bias, the responsibilities of facilitators, and strategies for overcoming potential challenges during facilitation. Required participation for those interested in completing the EDI facilitator badge.

go.rutgers.edu/tccfacilitate

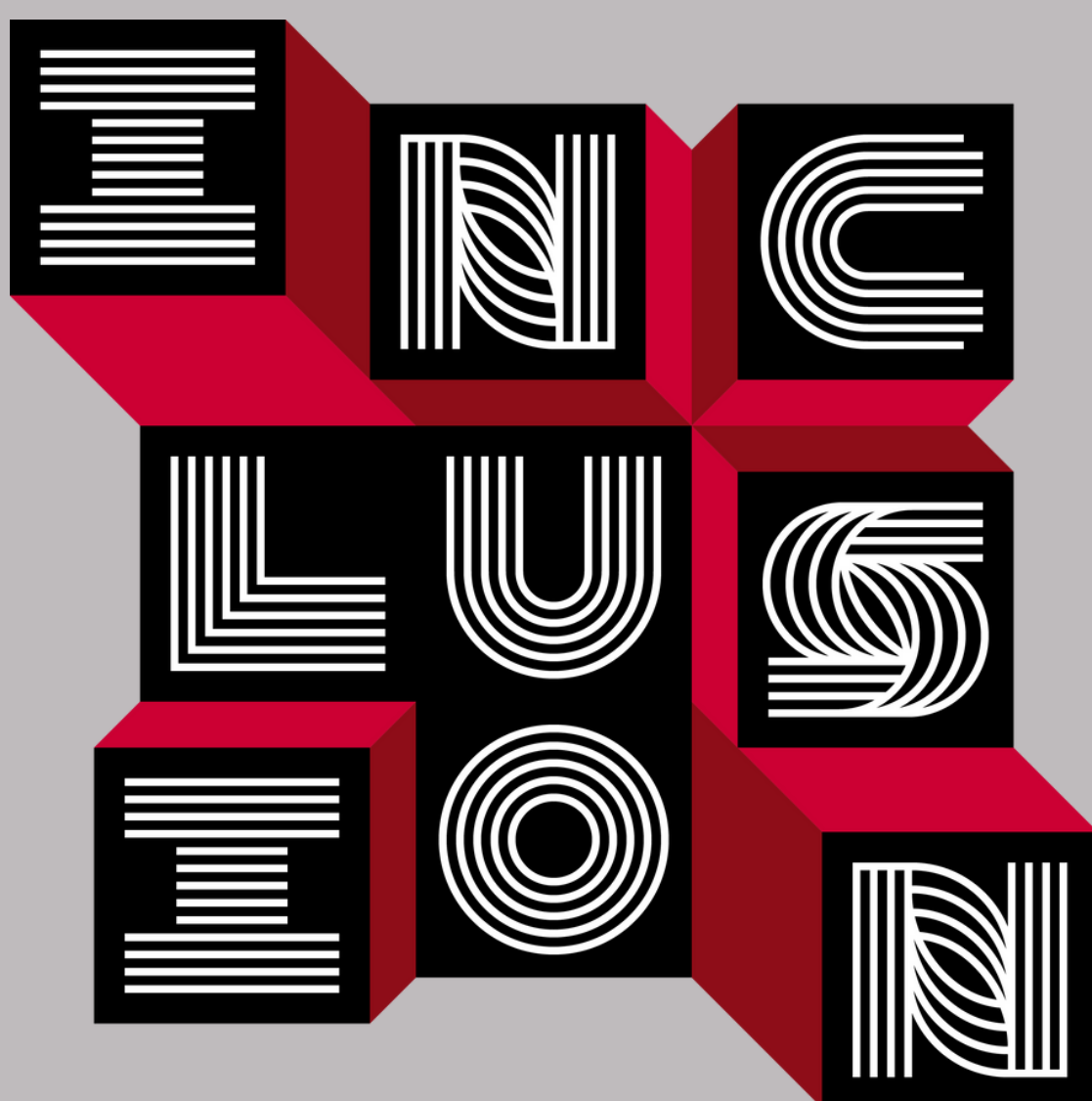


RUTGERS

Division of Diversity, Inclusion,
and Community Engagement

106 Somerset Street
Gateway Transit Village, 7th floor
New Brunswick, NJ 08901

WORK TOWARDS



RUTGERS

diversity.rutgers.edu

Spring 2024

Dear New Brunswick Faculty and Staff,

We are excited to share the Spring 2024 Calendar, which highlights a few upcoming events for faculty and staff offered by the Division of Diversity, Inclusion, and Community Engagement (DICE) to nurture a vibrant, inclusive campus community through diversity education and venues to engage across differences. It also features opportunities for engagement sponsored by University Equity and Inclusion and the Faculty Diversity Collaborative, which are open to the Rutgers community across Chancellor-led units.

We would be remiss if we did not acknowledge that this is a challenging time. How we respond as a community matters now more than ever. There are many ways to meet this moment, but not all are productive. Let's choose to meet this moment with humanity. Institutionally, we are committed to building an inclusive community, even amid deep tension. Join us for an upcoming university-wide speaker series, "Navigating Tensions, Affirming Community," and documentary series, "Reject Hate." Both encourage us to embrace our shared humanity, acknowledging its messiness and contradictions. Do your part and engage. Listen to a speaker. View a documentary. Most importantly, commit to moving beyond proximity to build community.

To stay informed, visit nbdiversity.rutgers.edu, join our mailing list, and follow us on social media @RUDiversity.

In partnership,

Anna Branch

Enobong (Anna) Branch, Ph.D.
Senior Vice President for Equity and Professor of Sociology

Tiffany Butler

Tiffany Butler, Ph.D., ATC
Associate Vice Chancellor for Educational Equity